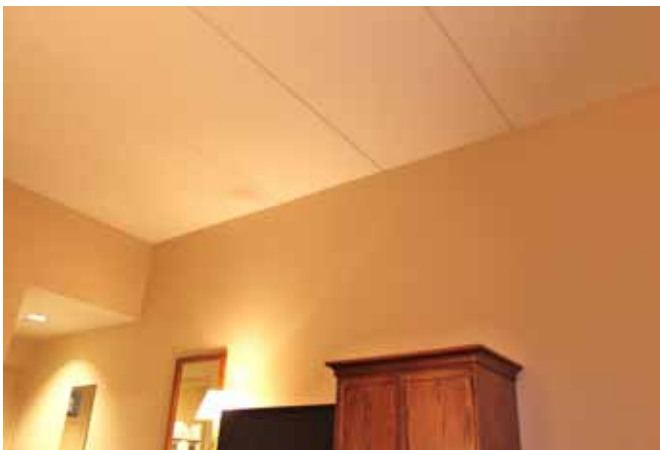


Holiday Inn

Bedford, New Hampshire



If you have an early morning flight out of Manchester Regional Airport, the Holiday Inn hotel in Bedford, NH is where you might want to stay.

Located less than two miles from the terminals, this 94 room hotel features two restaurants: the Airport Diner; and the Aviator Lounge.

Opened in 2003, the hotel used 53,000 square feet of 8" thick Strescore plank on its four floors.

Architects: **BMA Architectural Group Inc.** - Amherst, NH.
Engineer: **Allied Engineering Inc.** - Westbrook, ME.
Construction Manager: **Eckman Construction Co. Inc.** - Bedford, NH.



website: www.strescon.com
email: sales@strescon.com

Corporate Office
400 Chesley Drive
Saint John, NB E2K 5L6
Phone: 506-632-2600
Fax: 506-632-7689

New Brunswick Plant
101 Ashburn Road
Saint John, NB E2L 3W2
Phone: 506-633-8877
Fax: 506-632-7576

Strescon is a member of the OSCO Construction Group

Nova Scotia Plant
131 Duke Street
Bedford, NS B4A 3Z8
Phone: 902-494-7400
Fax: 902-494-7401

New England Office
25 Burlington Mall Road
Burlington, MA 01803
Phone: 781-221-2153
Fax: 781-221-2155