

# Kimball Woods Garage

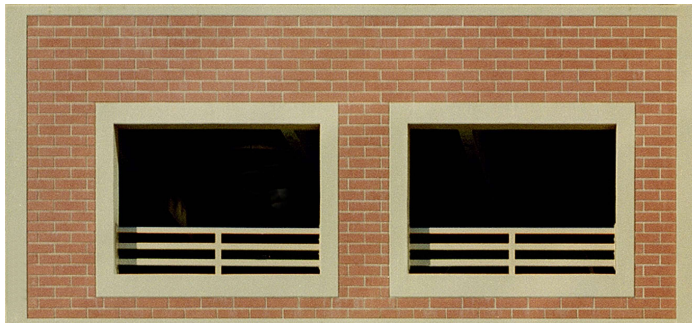
Burlington, Massachusetts

*Focus on  
Precast Concrete Solutions*



Photograph by Hutchins Photography Inc.

This 400 car parking structure was erected between two 10-story residential towers on the Burlington / Woburn town line. Completed in the summer of 2006, the 86,000 sf garage was erected in less than a month. The precast concrete spandrel beams and the wall panels that frame the front face of the garage, were clad with red brick tiles to match the surrounding apartment buildings.



Photograph by Hutchins Photography Inc.



Photograph by Hutchins Photography Inc.

Project: **Kimball Woods Garage - Burlington, Massachusetts**  
Architects: **Sheskey Architects - Quincy, Massachusetts**  
Structural Consultants: **Veitas and Veitas - Braintree, Massachusetts**  
Construction Manager: **Erland Construction, Inc. - Burlington, Massachusetts**



website: [www.strescon.com](http://www.strescon.com)  
e-mail: [sales@strescon.com](mailto:sales@strescon.com)

**Corporate Office**  
400 Chesley Drive  
PO Box 3187  
Saint John, NB E2M 3S3  
Phone: 506-632-2600  
Fax: 506-632-7689

**New Brunswick Plant**  
101 Ashburn Road  
Saint John, NB E2L 3W2  
Phone: 506-633-8877  
Fax: 506-632-7576

**Nova Scotia Plant**  
131 Duke Street  
PO Box 44205  
Bedford, NS B4A 3Z8  
Phone: 902-494-7400  
Fax: 902-494-7401

**New England Office**  
25 Burlington Mall Road  
Burlington, MA 01803  
Phone: 781-221-2153  
Fax: 781-221-2155

*Strescon is a member of the OSCO Construction Group*

**P A R K I N G G A R A G E S**  
S t r u c t u r a l B u i l d i n g S y s t e m s