

# Metr@Park™

Halifax, Nova Scotia

*Focus on  
Precast Concrete Solutions*



P A R K I N G G A R A G E S  
S t r u c t u r a l B u i l d i n g S y s t e m s

**Metro Park** opened in the early spring of 2002 adding much needed parking spaces in the downtown area of Halifax with this new high tech, seven level parking and commercial structure.

The structure was constructed with a precast prestressed concrete building system using beams, columns, architectural spandrels, shearwalls, litewalls and double tee floor slabs.

The layout of the garage is continuous interwoven spiral ramp with two way traffic flow. The building was serviced with two precast concrete stair towers and one elevator.

The designers wanted the Parking structure to blend in with surrounding older brick and stone in

downtown Halifax. To accomplish this, the lower two floors were clad with earth colored pigmented precast concrete panels to express the architecture of the area.

The column free interior of this parking garage provides parking for 575 cars in 165,000 sq. ft. of floor area. The two level / 8,500 sq. ft. of commercial, leased, space offers a beautiful view of Halifax Harbor.



Owner: **Halifax Regional Municipality - Halifax, Nova Scotia**  
Developer: **The Hardman Group - Halifax, Nova Scotia**  
Architects: **Duffus Romans Kundzins Rounsefell Architects Ltd. - Halifax, Nova Scotia**  
Structural Consultants: **Campbell Comeau Engineering Limited - Halifax, Nova Scotia**  
General Contractor: **McAlpine Construction - Halifax, Nova Scotia**  
Precast Fabricator: **Strescon Limited - Saint John, New Brunswick**

website: [www.strescon.com](http://www.strescon.com)  
e-mail: [sales@strescon.com](mailto:sales@strescon.com)

*Strescon is a member of the OSCO Construction Group*



**Corporate Office**  
400 Chesley Drive  
PO Box 3187  
Saint John, NB E2M 3S3  
Phone: 506-632-2600  
Fax: 506-632-7689

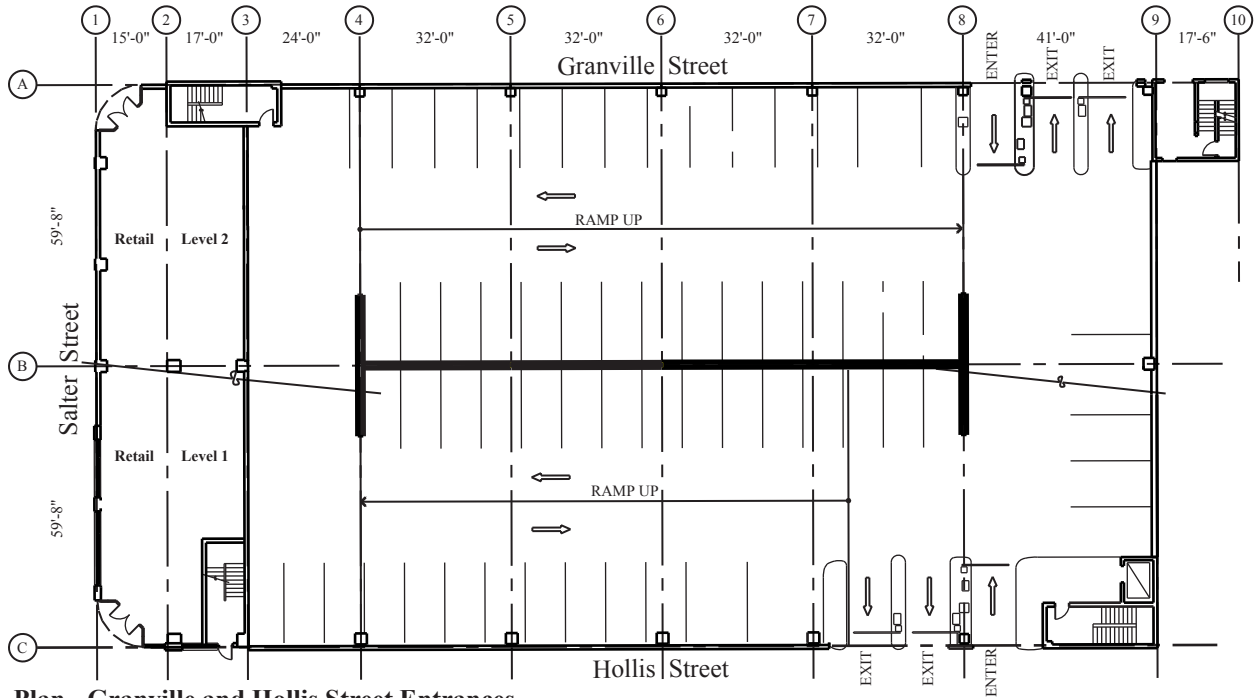
**New Brunswick Plant**  
101 Ashburn Road  
Saint John, NB E2L 3W2  
Phone: 506-633-8877  
Fax: 506-632-7576

**Nova Scotia Plant**  
131 Duke Street  
PO Box 44205  
Bedford, NS B4A 3Z8  
Phone: 902-494-7400  
Fax: 902-494-7401

**New England Office**  
25 Burlington Mall Road  
Burlington, MA 01803  
Phone: 781-221-2153  
Fax: 781-221-2155

# MetrPark™

Halifax, Nova Scotia



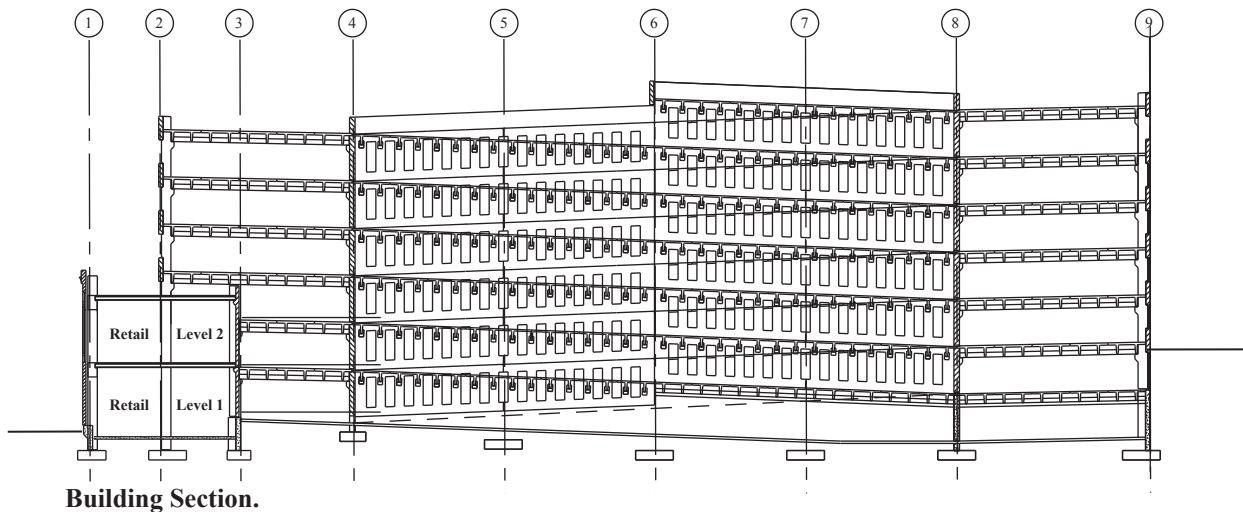
Plan - Granville and Hollis Street Entrances.



Open Unobstructed Visibility.



Column Free Interior Space.



Building Section.

## PROJECT FACTS:

- ★ 832 Precast Concrete Pieces
- ★ 10'-0" floor to floor
- ★ 60 ft. pre-topped clear spans
- ★ 150,000 sq. ft. of parking
- ★ Two way traffic
- ★ 5000 sq. ft. of retail space
- ★ 120'-0" x 242'-6" footprint
- ★ Low slope ramps
- ★ 2.5 months to erect the precast