



STRESCORE PLANK

FOR RESIDENTIAL CONSTRUCTION



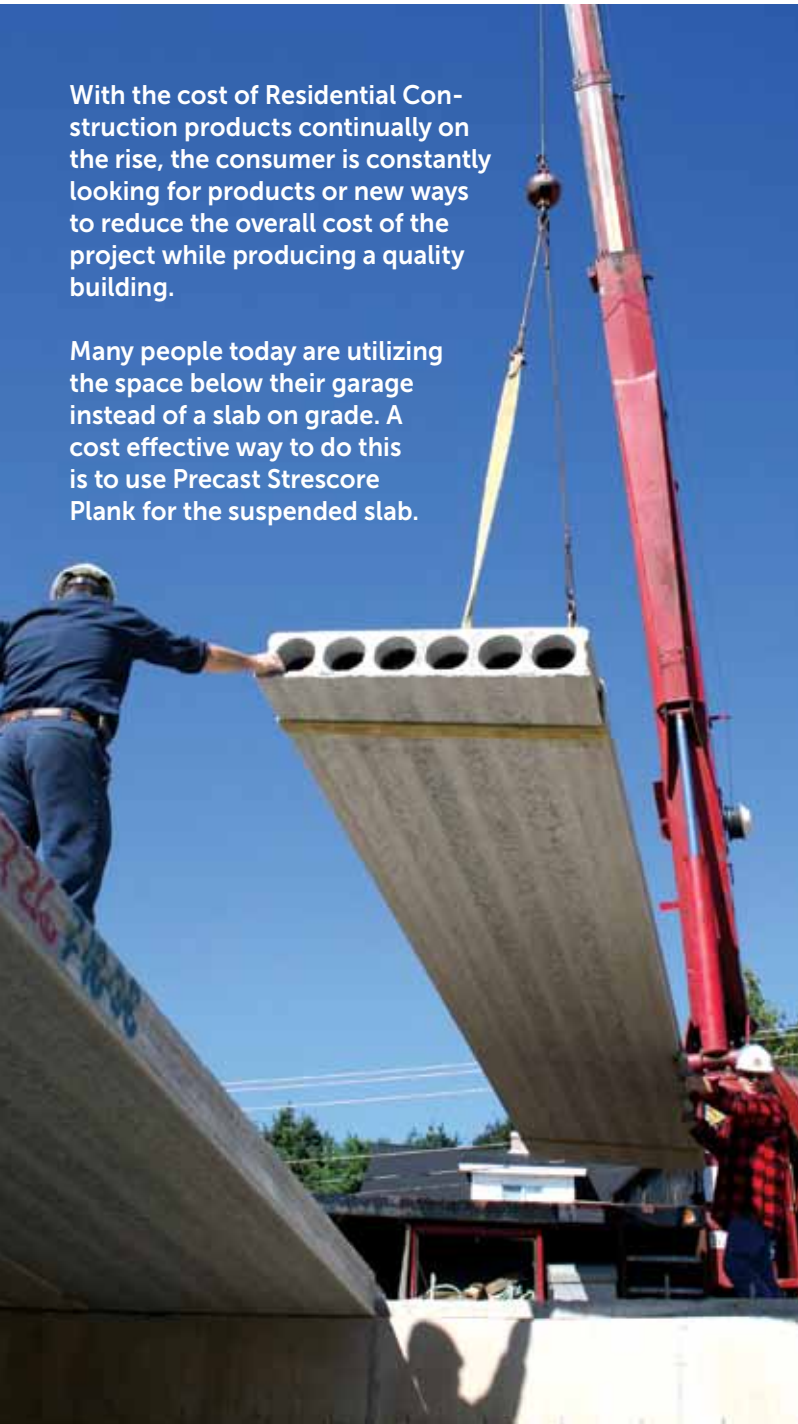
THE PRECAST CONCRETE FLOOR THAT CREATES SPACE



DESIGN ADVANTAGES

With the cost of Residential Construction products continually on the rise, the consumer is constantly looking for products or new ways to reduce the overall cost of the project while producing a quality building.

Many people today are utilizing the space below their garage instead of a slab on grade. A cost effective way to do this is to use Precast Strescore Plank for the suspended slab.



Precast / Prestressed Strescore Plank offer many key benefits:

- Speed Of Construction
- Light Weight Floor System
- Immediate Working Platform
- Finished Ceiling
- All Weather Construction
- Design Freedom
- Superior Fire And Sound Characteristics



INSTALLATION GUIDELINES*



Erecting equipment is sized by a **competent rigger**.

step 1



Strescore does not have lift loops and is instead picked up with **slings** or **chokers**, located no more than 12" from each end.

step 2



A **plastic strip** for plank bearing is placed 1/2" from the wall edge. A minimum 3" bearing surface is required at each end of the Strescore.

step 3



Strescore requires a **minimum 3" bearing surface. NEVER cantilever** Strescore unless it has been designed for a cantilever.

step 4



After Strescore is placed, planks may be positioned using **pry bars** at the joints. Once in place, the Strescore should be **leveled** from the underside.

step 5



Field cut openings **should not cut any strand**. The strand can be visually located at the end of the Strescore Plank.

step 6



All Strescore keyways must be **cleared** of all **debris** and the joints wetted just prior to grouting to insure good bonding and proper curing.

step 7



Once the Strescore is leveled and wet-down, all joints are grouted. Approximated **1-1/2 cu.yds.** of grout is required for every **1000 sq. ft.** of 8" thick Strescore plank.

step 8

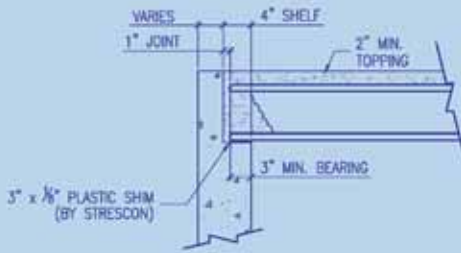
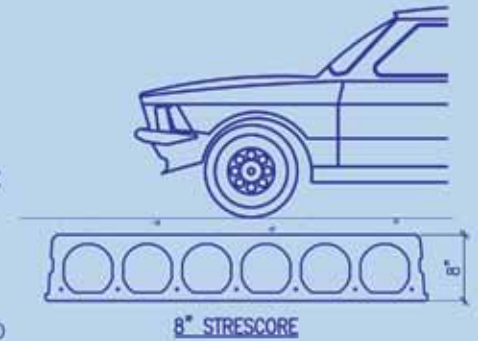
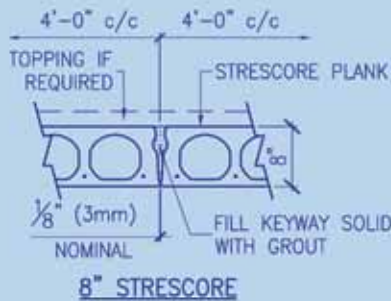


Grout must be kept from freezing while curing. A minimum temperature of **40 degrees** must be maintained for **24 hours. No load** should be placed on the Strescore until the grout has cured for at least **48 hours**.

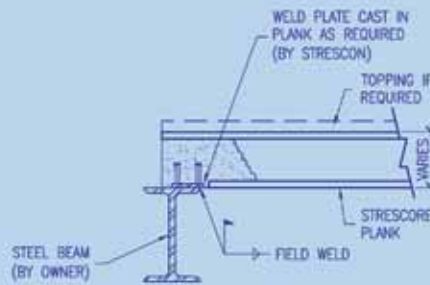
step 9

* The installation guidelines set out above are for general information and guidance only. Actual installation should be conducted in accordance with the detailed procedures set out in the most current PCI Erectors Manual (MNL-127-99) and in compliance with applicable Health and Safety requirements and local codes. Grout shall be cured in accordance with the requirements of CSA A23.1 (Canada) and ACI 308R (US).

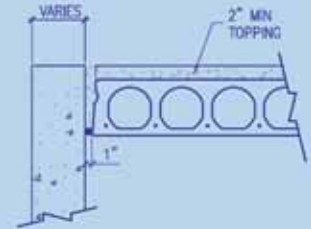
CONSTRUCTION DETAILS



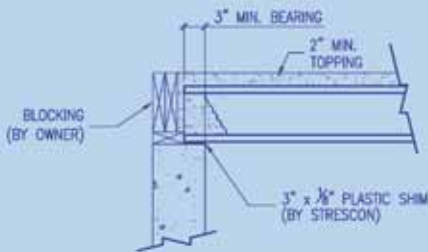
LOAD BEARING WALL SHELF CONNECTION



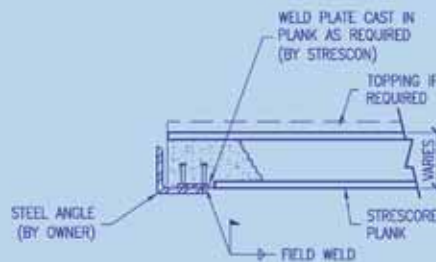
HEADER BEAM WHEN REQUIRED



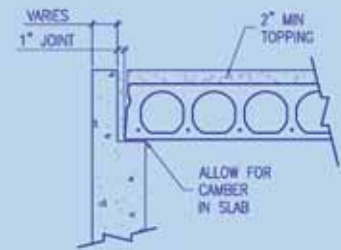
END WALL SECTION WITHOUT SHELF



LOAD BEARING WALL TOP OF WALL CONNECTION



HEADER ANGLE WHEN REQUIRED



END WALL SHELF SECTION



website: www.strescon.com • email: sales@strescon.com

Strescon is a member of the OSCO Construction Group

Corporate Office
400 Chesley Drive
Saint John, NB E2K 5L6
Phone: 506-632-2600
Fax: 506-632-7689

New Brunswick Plant
101 Ashburn Lake Road
Saint John, NB E2J 5B8
Phone: 506-633-8877
Fax: 506-632-7576

Nova Scotia Plant
131 Duke Street
Bedford, NS B4A 3Z8
Phone: 902-494-7400
Fax: 902-494-7401

New England Office
25 Burlington Mall Road
Burlington, MA 01803
Phone: 781-221-2153
Fax: 781-221-2155